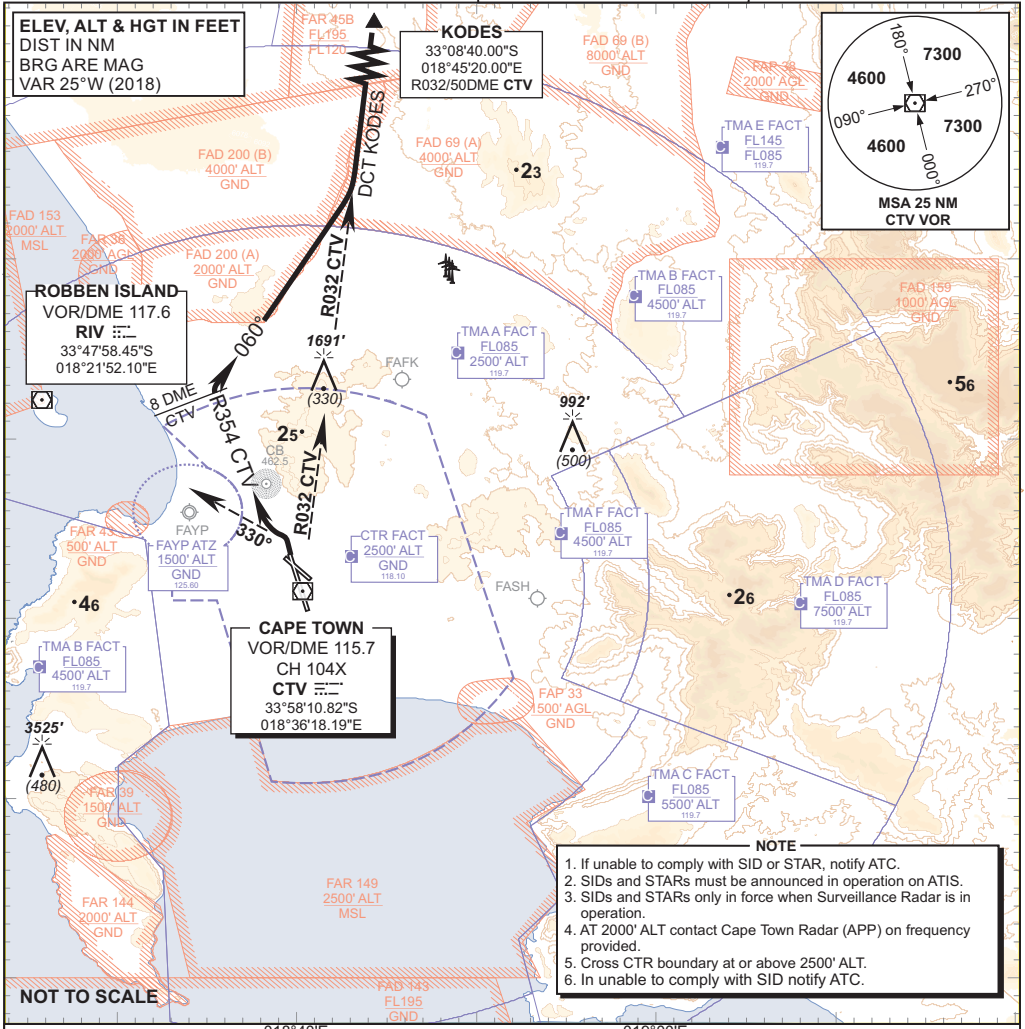


STANDARD DEPARTURE CHART - INSTRUMENT (SID)

TRANSITIONAL ALTITUDE
7500'
 TRANSITIONAL LEVEL
ATC

APP 119.70
 TWR 118.10
 ATIS 127.00

CAPE TOWN INTL RWY 01
 KODES 1A



APP Frequency changed only
 CHANGE: No other changes were performed

<p>KODES 1A. RWY 01</p>	<p>Climb to FL090, maintain RWY track to 3DME CTV, then turn left 330° to intercept R354 CTV (OUBD). Passing 8DME CTV turn right to track 060° to intercept R032 CTV (OUBD) direct KODES. Further climb will be under radar control. At KODES set course as per flight plan.</p>
<p>COMMUNICATION FAILURE PROCEDURE (Squawk 7600)</p>	<p>Comply with the KODES 1A SID, maintain last assigned level. Passing 30DME CTV climb to flight plan level. At KODES continue as per flight plan.</p> <p>Aircraft wishing to return must continue to the SID termination point at FL090, then proceed to ERDAS and comply with the appropriate ERDAS STAR Communication Failure procedure.</p>